



INSTRUCTION BULLETIN

No. 9007895
Machine: S30
Published: 04-2010
Rev. 00

NOTE: DO NOT DISCARD the Parts List from the Instruction Bulletin. Place the Parts List in the appropriate place in the machine manual for future reference. Retaining the Parts List will make it easier to reorder individual parts and will save the cost of ordering an entire kit.

NOTE: Numbers in parenthesis () are reference numbers for parts listed in Bill of Materials.

Installation instructions for **kit number 9007918, 9007919**

SYNOPSIS:

This kit contains the parts needed to replace the front, side, top, and rear covers on S30 machines. Please follow step-by-step instructions.

SPECIAL TOOLS / CONSIDERATIONS:

(Estimated time to complete: 10 hours)

Note: If the machine is equipped with any of the following options, additional kits will be required for replacing those options.

1. Bumper Kit, Ci, Conv, Rotomold [S30] - 9007917
2. Light Kit, Ci, Conv, Rotomold [S30] - 9007916
3. OHG Kit, Conv, F/Rotomold [S30] - 9008365
4. CS, Intake, High Rise, CI - 322289



PROTECT THE ENVIRONMENT

Please dispose of packaging materials, old machine components, and hazardous fluids in an environmentally safe manner according to local waste disposal regulations.

Always remember to recycle.

PREPARATION:

1. Park the machine on a clean level surface, turn off the machine, remove the key, and set the parking brake.

FOR SAFETY: Before leaving or servicing machine, stop on level surface, turn off machine, and remove key.

2. Disconnect the battery cables from the battery.



WARNING: Always disconnect battery cables from machine before working on electrical components.

INSTALLATION:

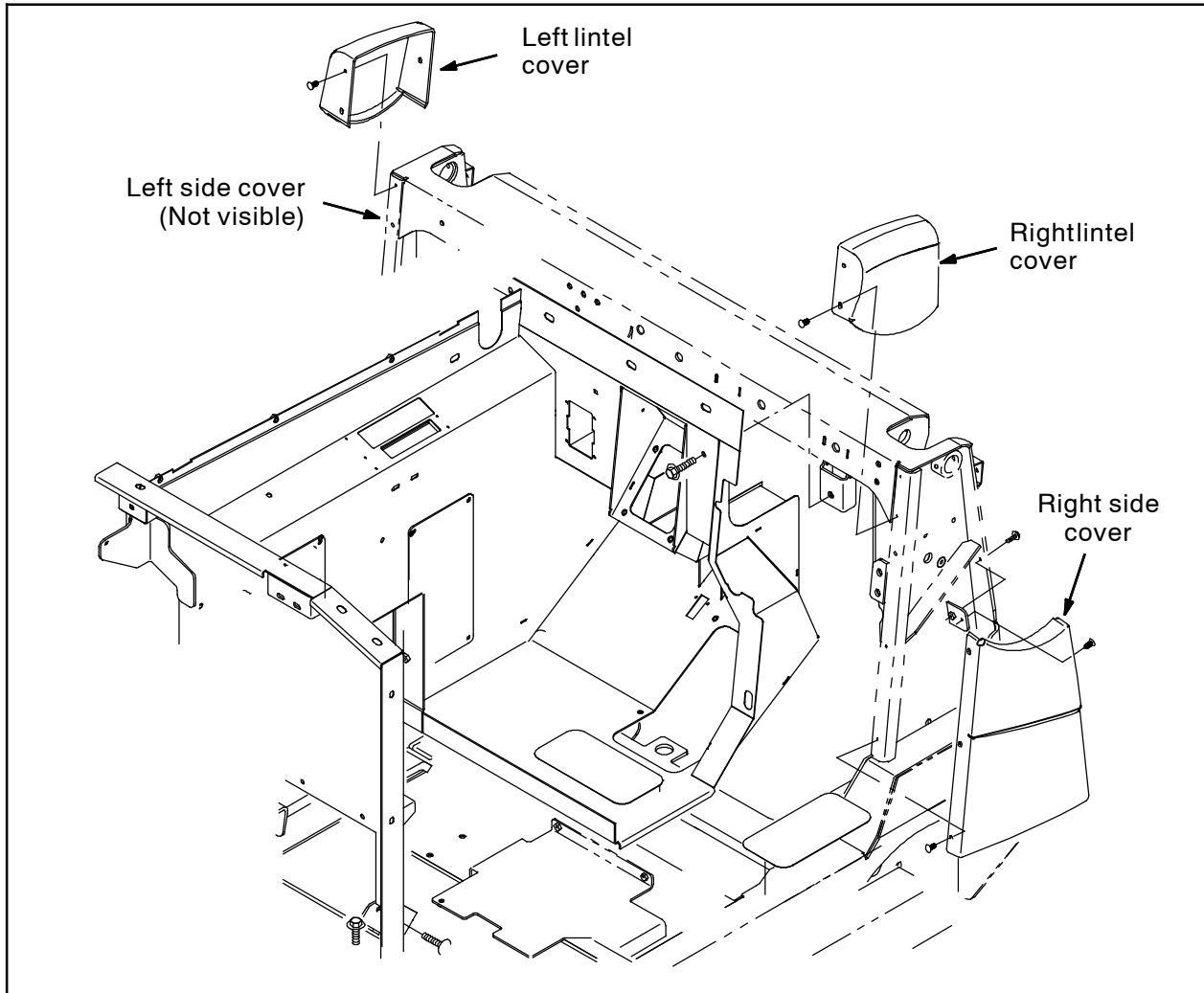


FIG. 1

1. Remove the right side cover, left side cover, right lintel cover, and left lintel cover from the machine. (Fig. 1)

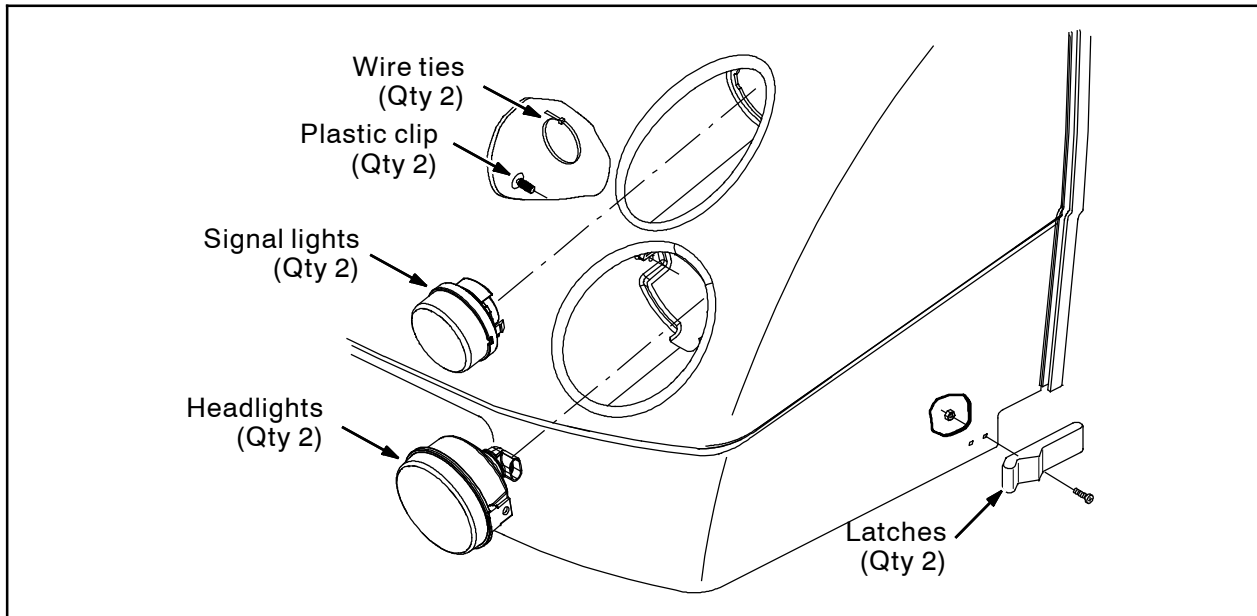


FIG. 2

2. Disconnect the light harness from the main wire harness.
3. Remove the hopper cover from the machine.
4. Remove the light harness from the hopper cover. (Fig. 2)
5. Cut the cable tie holding each headlight to the hopper cover. (Fig. 2)
6. Remove the plastic clip holding each headlight assembly to the hopper cover and remove the headlights. Set the headlight assemblies aside. (Fig. 2)
7. Remove the signal light assemblies from the hopper cover. Set the signal light assemblies aside. (Fig. 2)
8. Remove both latches from the hopper cover. Set the latches aside. (Fig. 2)
9. Discard the removed hopper cover.

10. Use two plastic clips (7), a pan screw (8), and a hex nut (9) to install a headlight into the left headlight ring (6) and right headlight ring (5). (Fig. 3)



FIG. 3

11. Use three pan screws (3) to install each headlight assembly into the hopper cover (1). (Fig. 4)

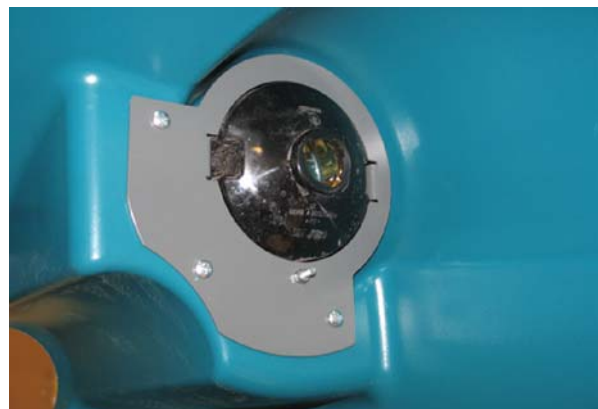


FIG. 4

12. Install each signal light assembly into a light ring plate (2). (Fig. 5 / Fig. 6)



FIG. 5



FIG. 6

13. Use three pan screws (3) to install each signal light assembly into the hopper cover (1). (Fig. 7)



FIG. 7

14. Install the light harness into the headlights and signal lights. (Fig. 8)

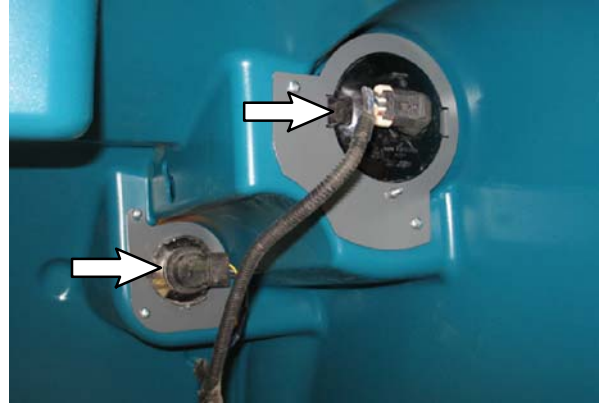


FIG. 8

15. Use two pan screws (97) to install each latch onto the hopper cover (1). (Fig. 9)



FIG. 9

16. Remove the right filter mounting bracket from the machine. Set the hardware aside. Discard the filter mounting bracket. (Fig. 10)

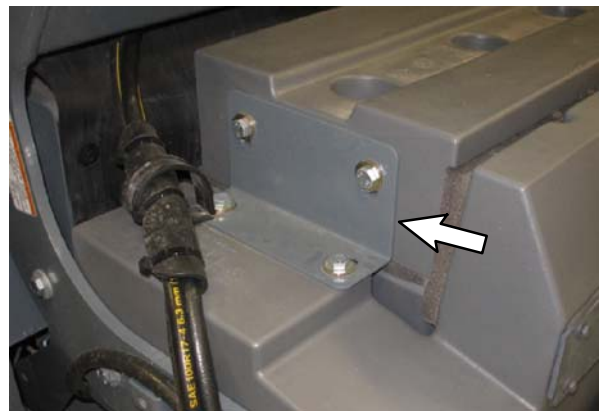


FIG. 10

17. Use the saved hardware to install the right filter mounting bracket (64) onto the machine where the removed right filter mounting bracket was located. (Fig. 10)

- Use one hex screw (89), two washers (4), one nylon washer (21), and one hex nut (109) to install the prop rod (91) onto the right filter mounting bracket (64). Do not completely tighten the hex screw / hex nut. The prop arm must move freely on the mounting bracket. (Fig. 11 / Fig. 12)

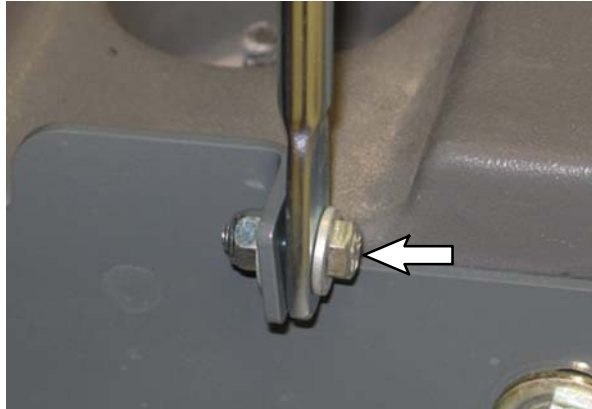


FIG. 11



FIG. 12

- Remove the hopper debris door and hopper door hinge assembly from the hopper. Set the hardware aside. Discard the hinge assembly. (Fig. 13)



FIG. 13

- Remove the latch components and hardware from the hopper debris door. Set the latch components and hardware aside. Discard the hopper debris door. (Fig. 14)

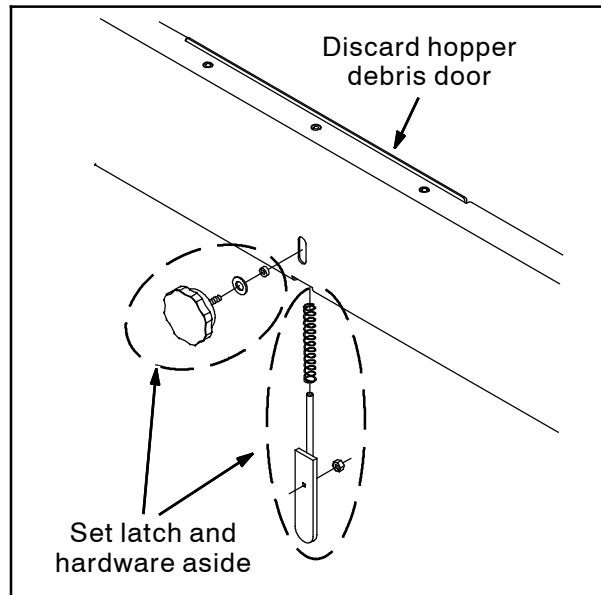


FIG. 14

- Install the latch components removed from the old hopper debris door in the previous step and the urethane gasket (110) into the hopper debris door (26). (Fig. 14)
- Use saved hardware to install the hopper debris door hinge assembly (20) onto the machine. (Fig. 15)



FIG. 15

- Install the hopper debris door (26) onto the hopper door hinge assembly (20).

24. Use two hex screws (88) and two hex nuts (17) to install the right hopper cover hinge (14) and left hopper cover hinge (15) onto the hopper lift assembly. (Fig. 16 / Fig. 17)

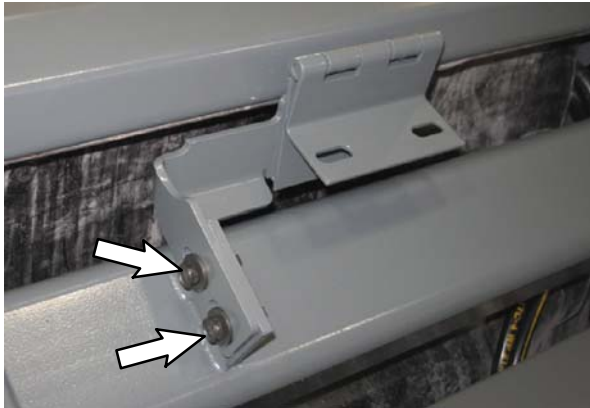


FIG. 16

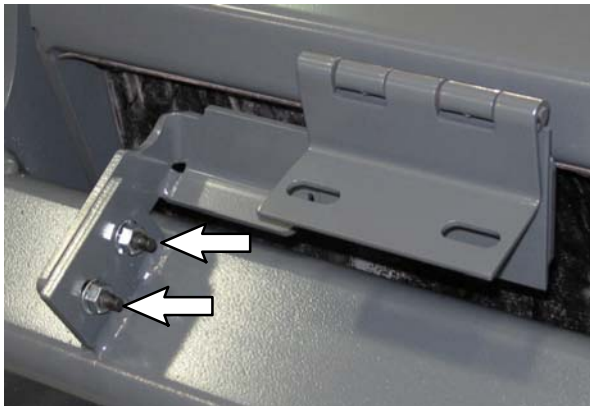


FIG. 17

25. Use four hex screws (18) and four flat washers (19) to install the hopper cover (1) onto the machine. (Fig 18)

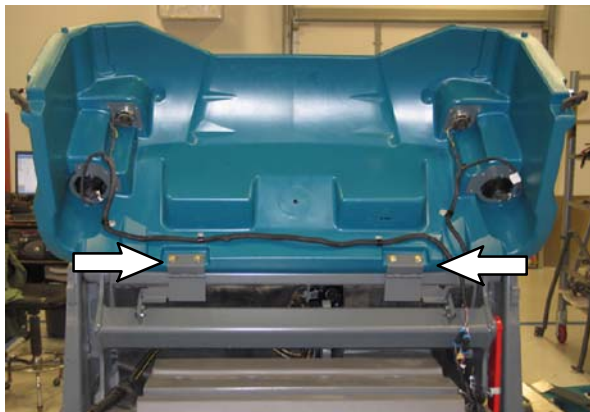


FIG. 18

26. Use four pan screws (3), four flat washers (4), and four p-clamps (84) to secure the light harness onto the hopper cover (1). (Fig. 19)

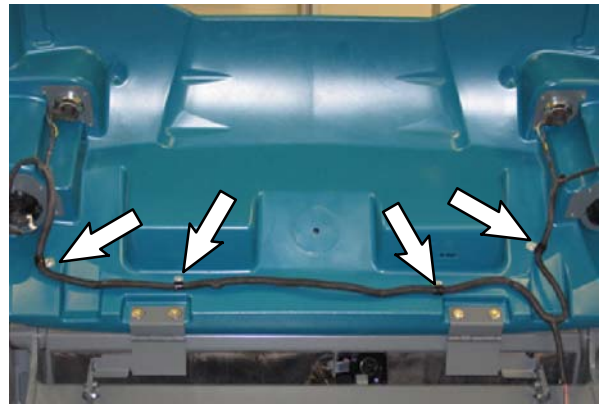


FIG. 19

27. Remove the top cover, hinges, gas spring, and mounting angle from the machine. (Fig. 20 / Fig. 21)

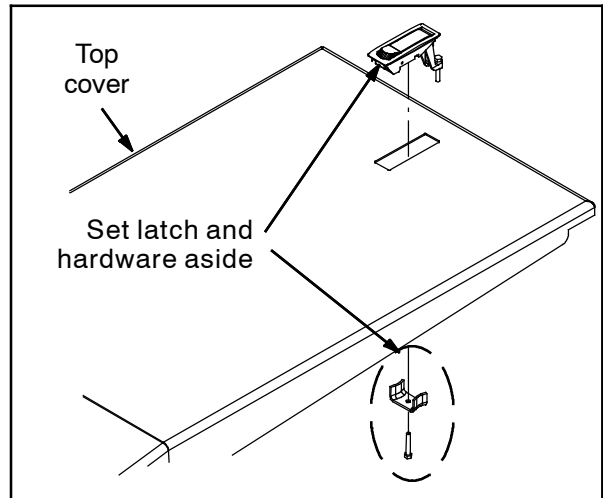


FIG. 20

28. Remove the latch from the top cover. Set the latch and hardware aside. Discard the top cover, hinges, gas spring, and mounting angle. (Fig. 20)

29. Use the SEMS hex screw previously used with the mounting angle to install the ground wire where the mounting angle was previously installed. (Fig. 21 / Fig. 22)

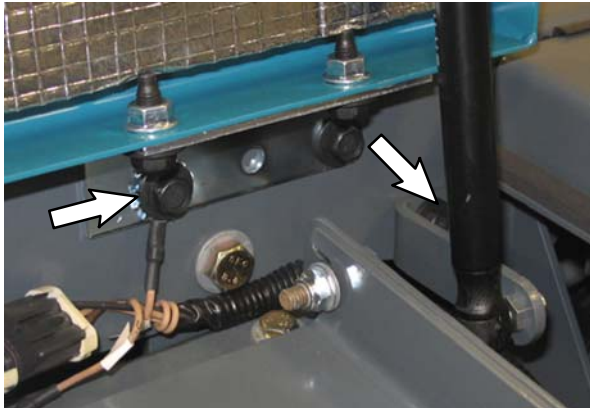


FIG. 21



FIG. 22

30. Remove the side cover from the machine and then remove the latch from the side cover. Set the latch and hardware aside. Discard the side cover. (Fig. 23)

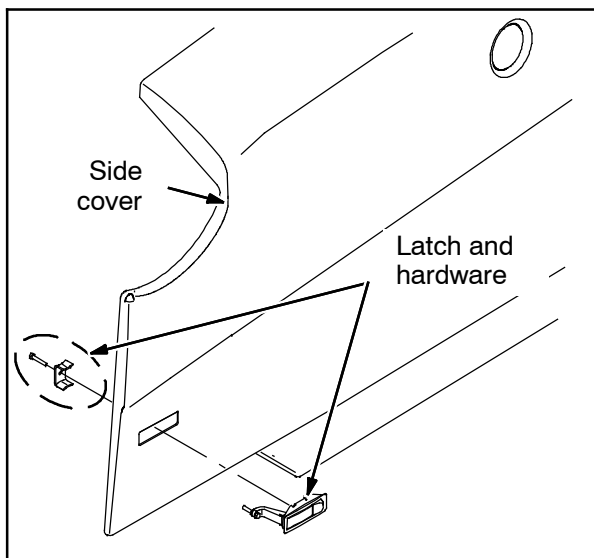


FIG. 23

31. **Machines equipped with side bumpers only:** Remove the side bumpers from the machine. Discard the bumpers and all hardware. (Fig. 24)

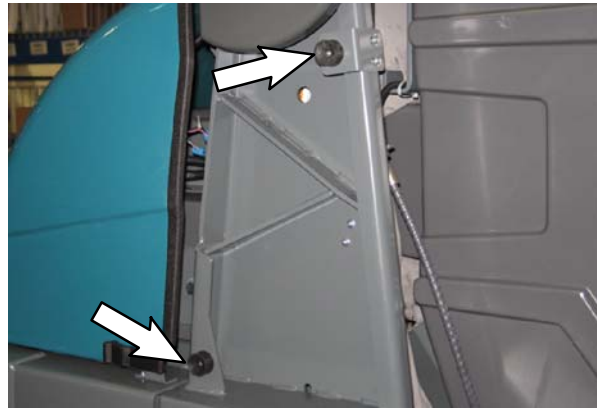


FIG. 24

32. Drill two 8 mm (0.315 in) holes into the left lift tower of the machine. (Fig. 25)

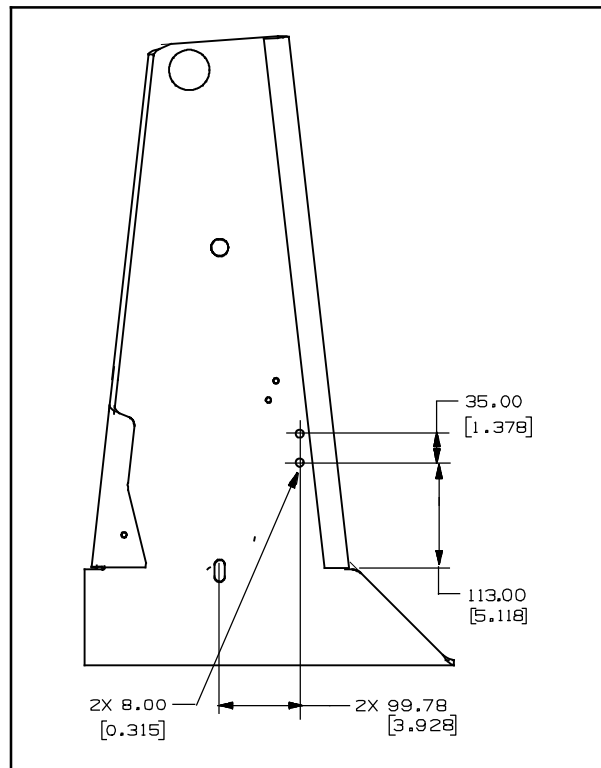


FIG. 25

33. Use two SEMS hex screws (11) and two flange nuts (13) to install the the side door latch bracket (40) onto the machine. (Fig. 26)

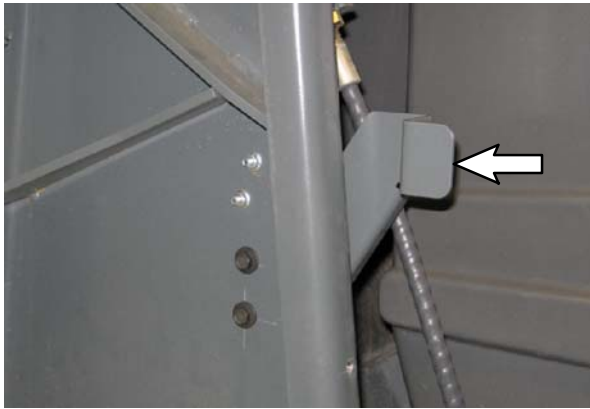


FIG. 26

34. Install the side cover (77) onto the machine.
35. Place the right lintel cover (74) onto the right tower lintel and use a hole plug (7) to secure the right lintel cover to the cover bracket on the right tower lintel. (Fig. 27 / Fig. 28 / Fig. 29)

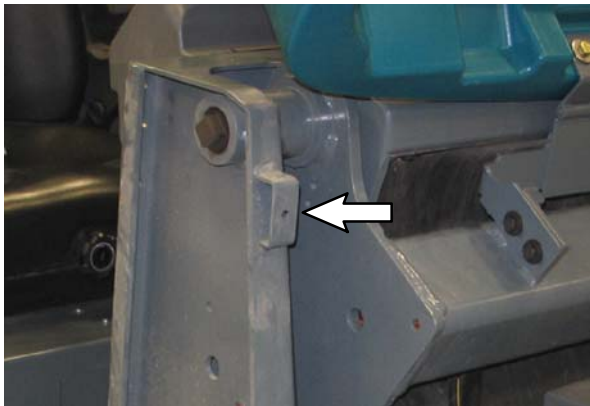


FIG. 27



FIG. 28

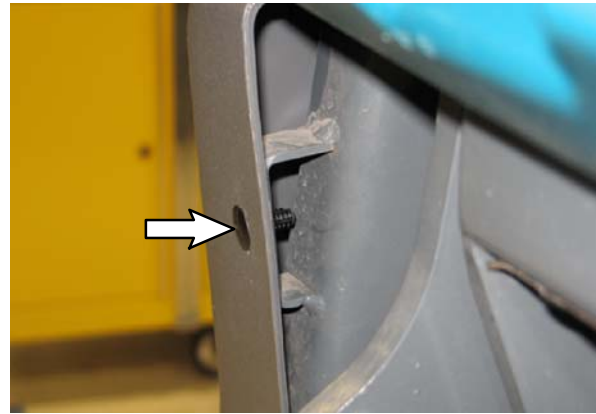


FIG. 29

36. Align the inside edge of the right lintel cover (74) with the inside edge of the right tower and use plugs (7) to further secure the right lintel cover to existing holes the right tower.
37. Mark and drill necessary 6.40 mm (0.25 in) holes through the existing holes in the right lintel cover (74) and through the right tower.
38. Use plugs (7) to finish securing the right lintel cover (74) to the machine. (Fig. 30)

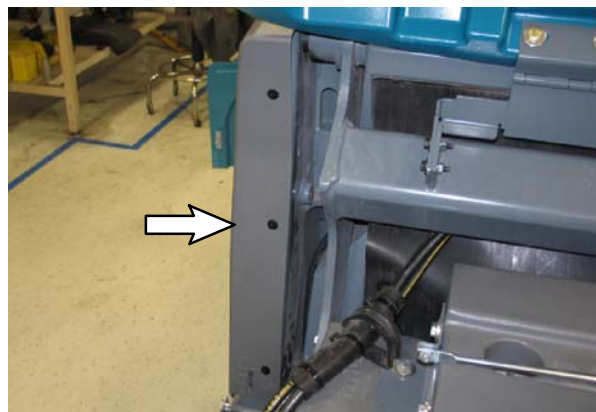


FIG. 30

39. Install the left lintel cover (73) onto the left tower lintel. Refer to Step 35 through Step 38 (right lintel cover (74) installation) to install the left lintel cover onto the machine.

40. Install the 305 mm (12 in) seal (111) onto left lintel cover (73). (Fig. 31)



FIG. 31

41. **Machines equipped with optional tower bumpers only:** Remove the tower bumpers and tower bumper brackets from the machine. Discard the tower bumpers, brackets and hardware.
42. **Machines equipped with optional flashing / strobe light and backup alarm only:** Disconnect the flashing light / backup alarm harness from the main harness.

43. **Machines equipped with optional flashing / strobe light and backup alarm only:** Remove the flashing light / backup alarm assembly from the rear cover. Set the flashing light / backup alarm assembly and all hardware aside.

44. Remove the rear cover and rear cover gas spring from the machine.

45. Remove the latches from the rear cover. Set the latches and hardware aside. Discard the rear cover. (Fig. 32)



FIG. 32

46. Remove the grill from the frame of the machine. Set the grill and hardware aside. (Fig. 33)

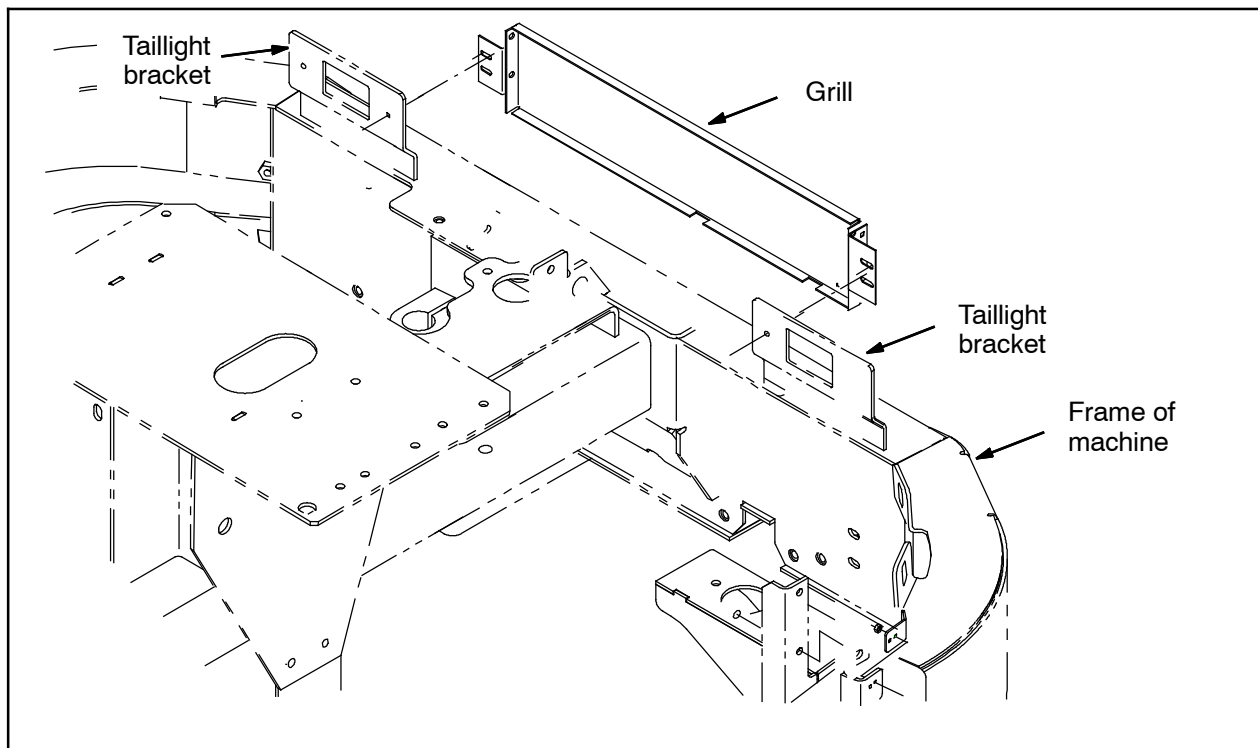


FIG. 33

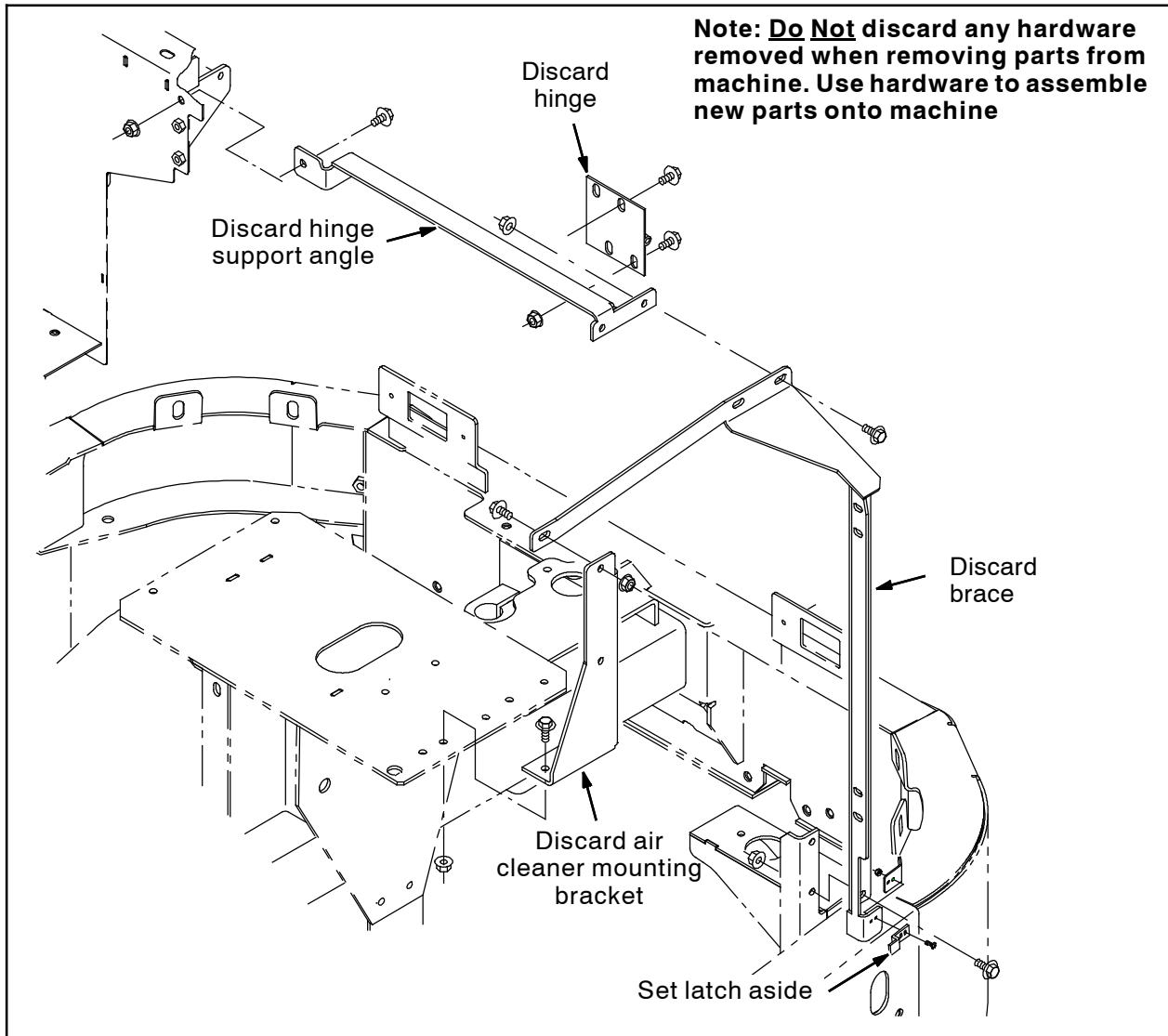


FIG. 34

47. Remove the brace, hinge support angle, hinge, air cleaner mounting bracket, and latch from the machine. Set the latch and all hardware aside. Discard the brace, and hinge support angle, hinge. (Fig. 34)

48. Remove the air filter clamp from the air cleaner mounting bracket. Set the air filter mounting clamp and all hardware aside. Discard the air cleaner mounting bracket. (Fig. 35)

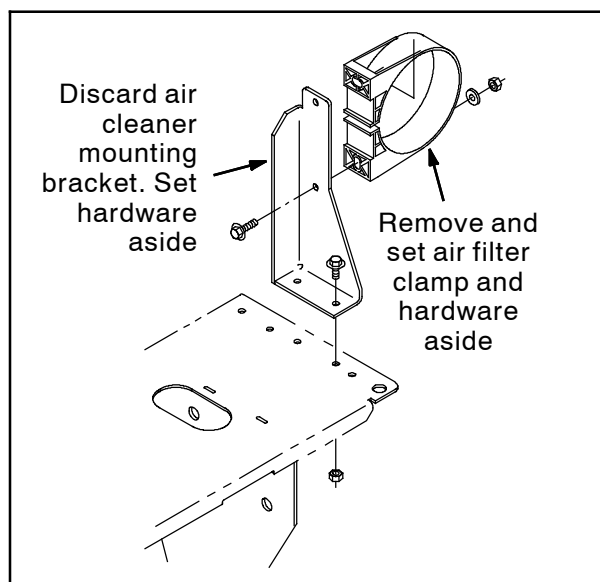


FIG. 35

49. **Machines equipped with LPG engines only:** Remove the air intake hose from the machine, cut 31.75 mm (1.25 in) from both ends of the hose, and reinstall the hose. (Fig. 36)



FIG. 36

50. Use saved hardware to install the left rear cover support (29) onto corner of operators station. Do not completely tighten hardware. Hardware is tightened during later adjustment. (Fig. 37)



FIG. 37

51. Use saved hardware to install the support brace (31) onto frame of machine. Do not completely tighten hardware. Hardware is tightened during later adjustment. (Fig. 38)

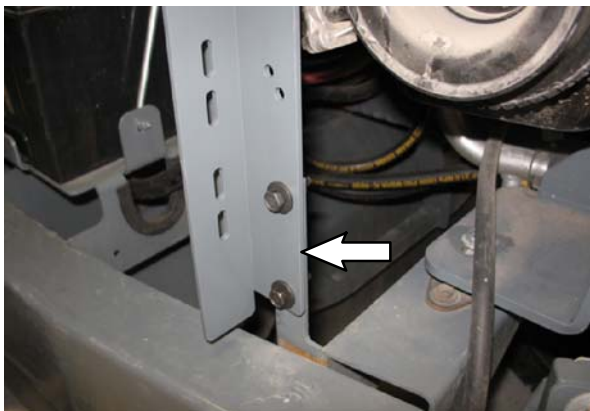


FIG. 38

52. Use saved hardware to install the left rear cover support (29) onto the support brace (31). Do not completely tighten hardware. Hardware is tightened during later adjustment. Refer to Fig. 39.

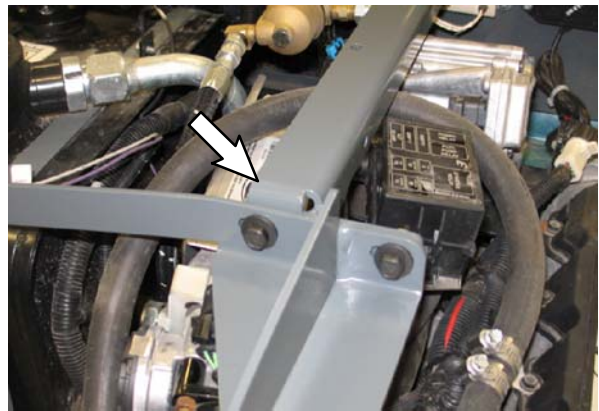


FIG. 39

53. Align the left rear cover support (29) with the hinge mounting bracket on the operator station. Refer to Fig. 40.

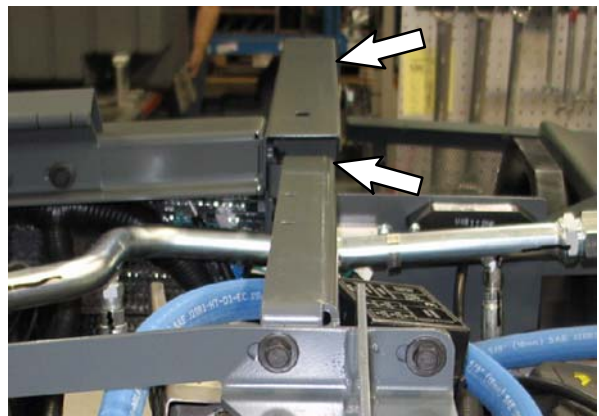


FIG. 40

54. Tighten hardware installed in Step 45 through Step 49. (Fig. 36 / Fig. 37 / Fig. 38 / Fig. 39 / Fig. 40 / Fig. 41)

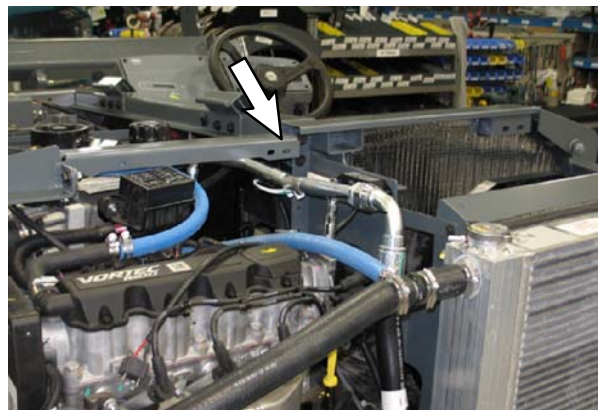


FIG. 41

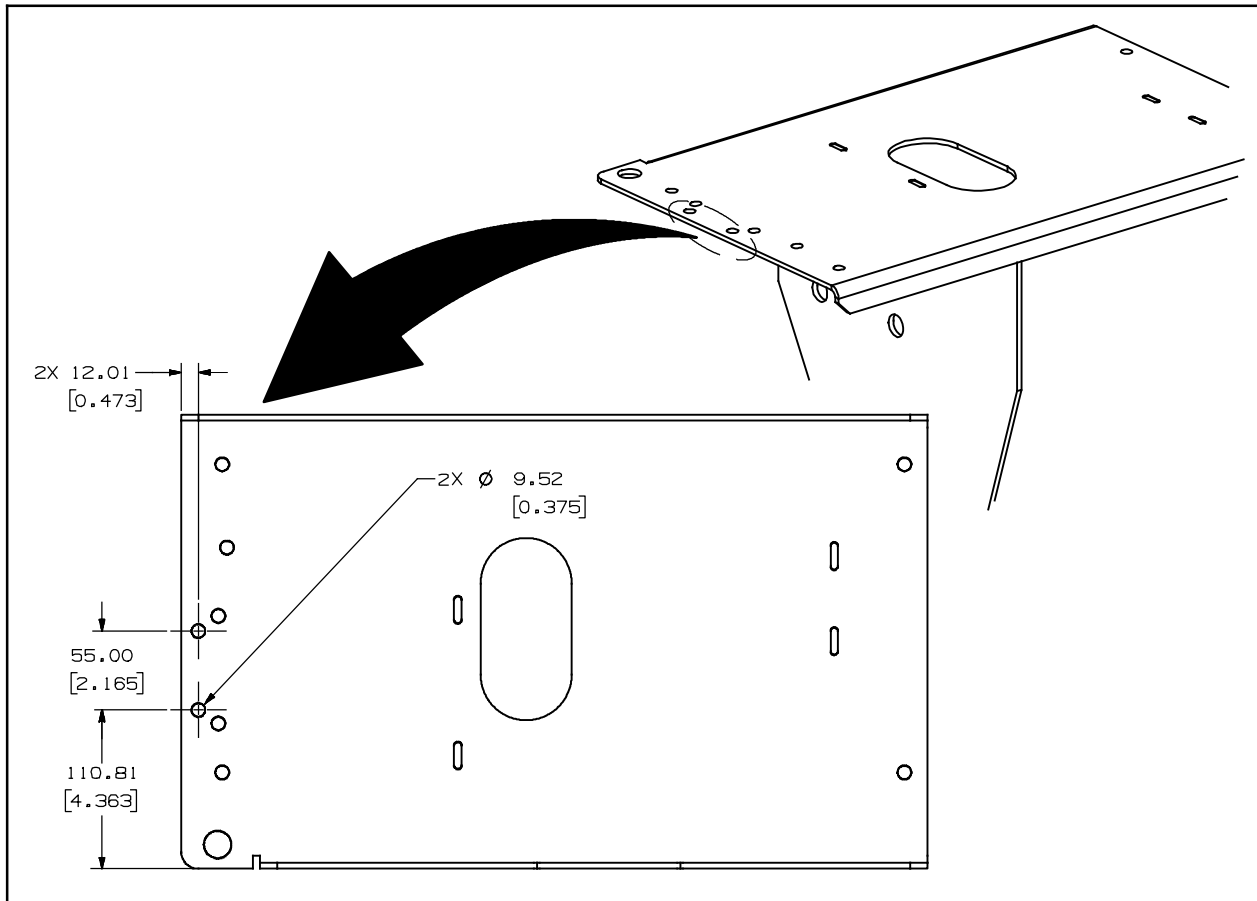


FIG. 42

55. Drill two 9.52 mm (0.375 in) holes into the hydraulic reservoir bracket. (Fig. 42)
56. Use saved hardware to install the air filter clamp onto the air cleaner bracket (25) and install the air cleaner bracket onto the machine. Do not completely tighten hardware. Hardware is tightened during later adjustment. (Fig. 43)

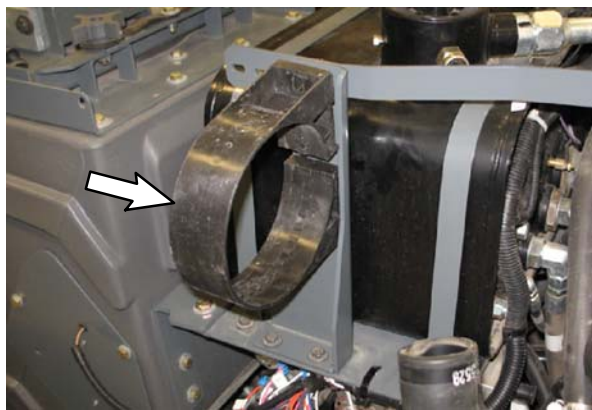


FIG. 43

57. Install the air filter assembly into the air filter clamp. (Fig. 44)

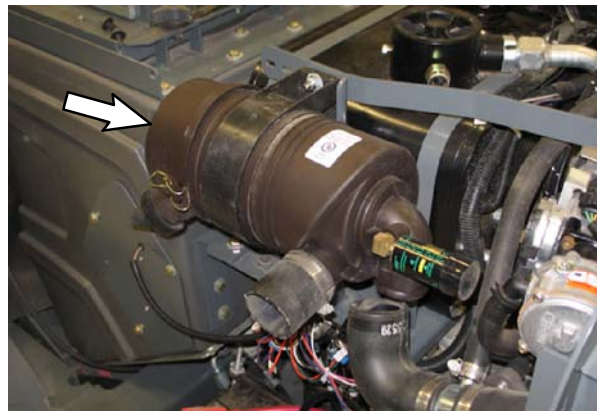


FIG. 44

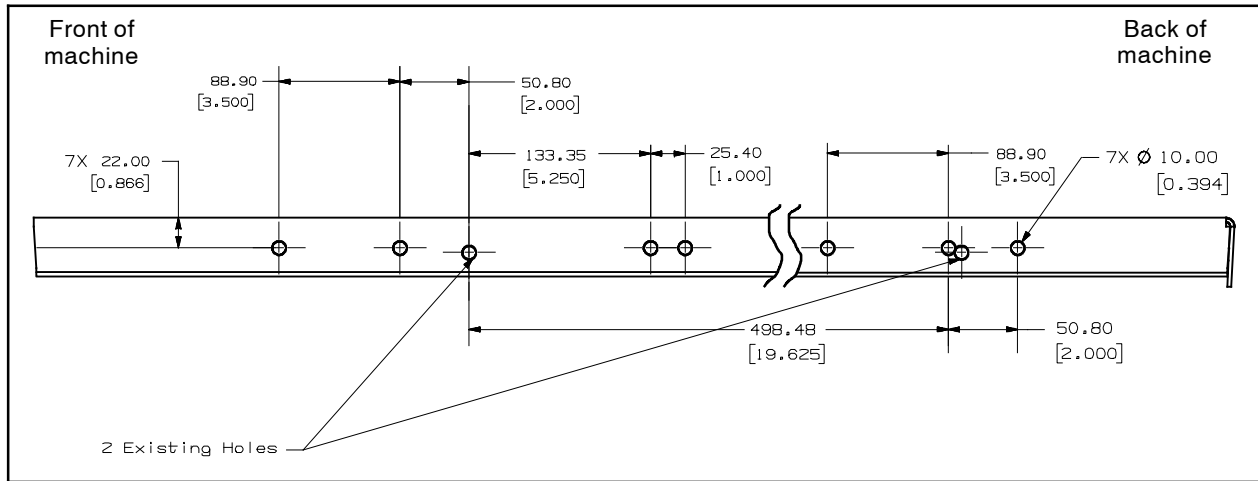


FIG. 45

- 58. Cut the wire ties holding the main wire harness to the operator station lip.
- 59. Drill seven 10 mm (0.394 in) holes into the operator station lip. (Fig. 45)
- 60. Use two SEMS hex screws (16) and two hex nuts (17) to install both top cover hinges (61) onto the operator station lip (55). (Fig. 46)

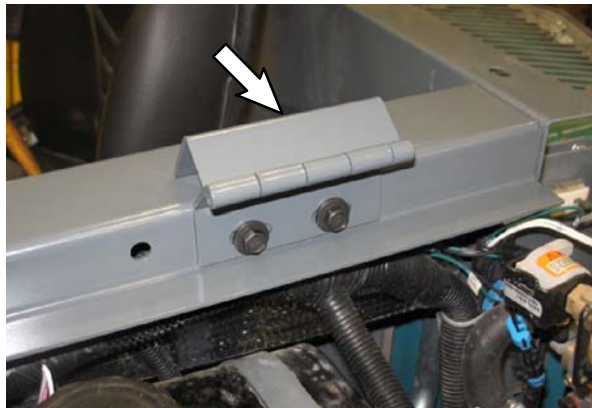


FIG. 46

- 61. Use two button head wire ties (102) to secure the main wire harness to the two remaining open holes in the operator station lip.

- 62. Use two SEMS hex screws (16), two hex nuts (17), two hex screws (11), and two hex nuts (13) to install the prop rod support bracket (44) and top cover latch bracket (12) onto the machine. Do not completely tighten hardware. Hardware is tightened during later adjustment. (Fig. 47)

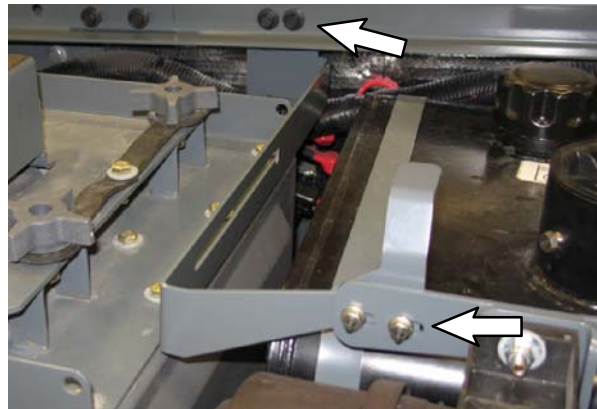


FIG. 47

- 63. Use two SEMS hex screws (11) to install the lintel angle bracket (10) onto the machine. (Fig. 48)

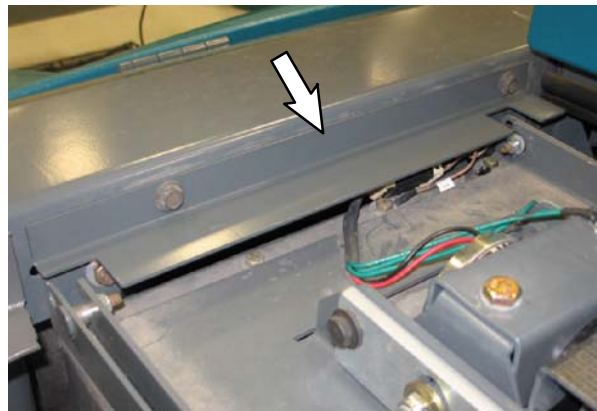


FIG. 48

64. Install a 460 mm (18 in) rubber seal (103) onto the lintel angle bracket (10). (Fig. 49)

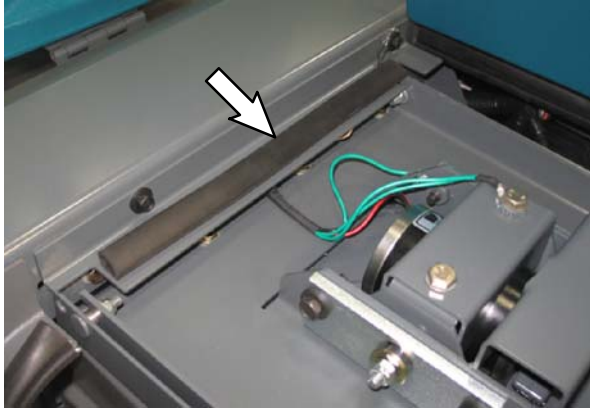


FIG. 49

67. Install a 1020 mm (40 in) rubber seal (98) onto the machine. (Fig. 52)

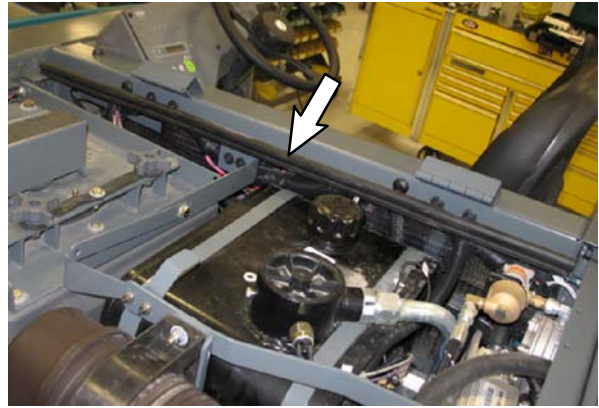


FIG. 52

65. Install a 410 mm (16 in) rubber seal (103) onto the left rear cover support (29). (Fig. 50)

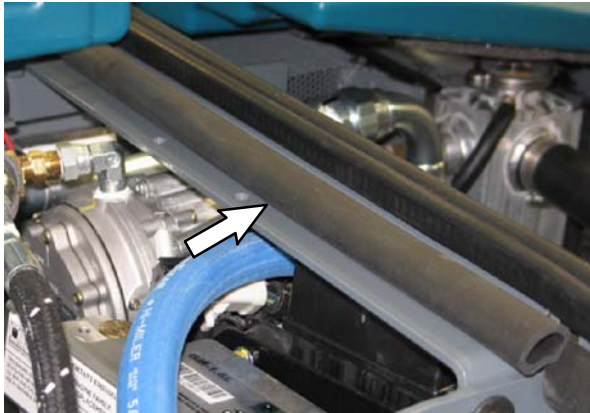


FIG. 50

68. Install the latch removed from the old top cover onto the top cover (81). (Fig. 53)

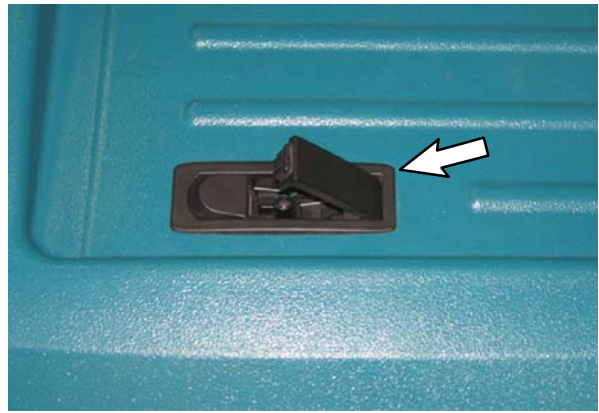


FIG. 53

66. Install a 280 mm (11 in) rubber seal (103) onto the support brace (31). (Fig. 51)

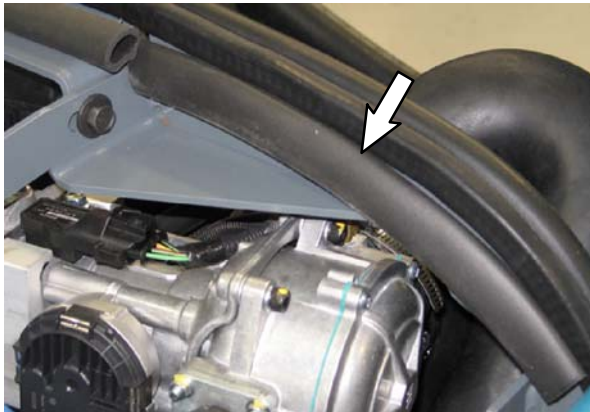


FIG. 51

69. Use two hex screws (51) and two flat washers (19) to install the top cover bracket (56) onto the top cover (81). (Fig. 54)

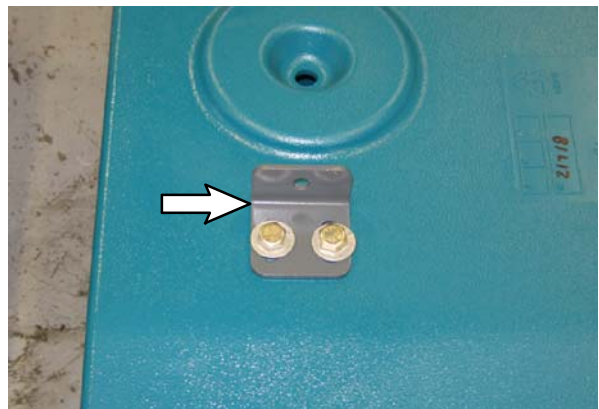


FIG. 54

70. Use a hex screw (58), two flat washers (19), nylon flat washer (21), and hex nut (60) to install the prop rod (57) onto the top cover bracket (56). Do not completely tighten hardware. Hardware is tightened during later adjustment. (Fig. 55)

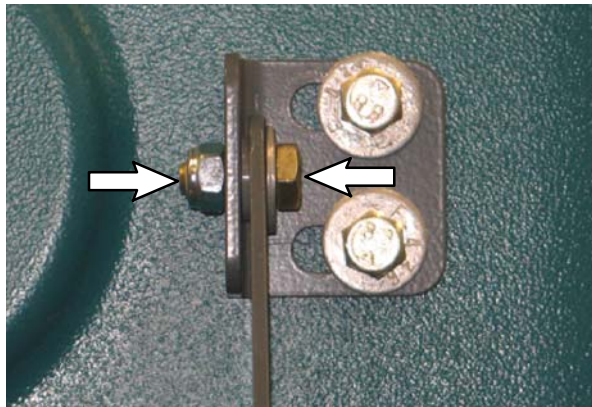


FIG. 55

71. Use four screws (105) to install the net (106) onto the top cover (81). (Fig. 56)

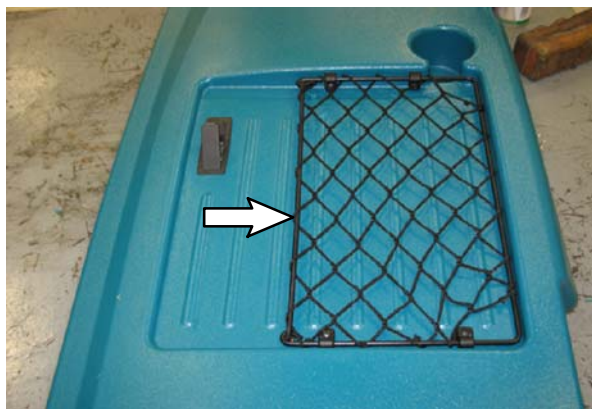


FIG. 56

72. Use four hex screws (51) and four flat washers (19) to install the top cover (81) onto the machine. (Fig. 57)

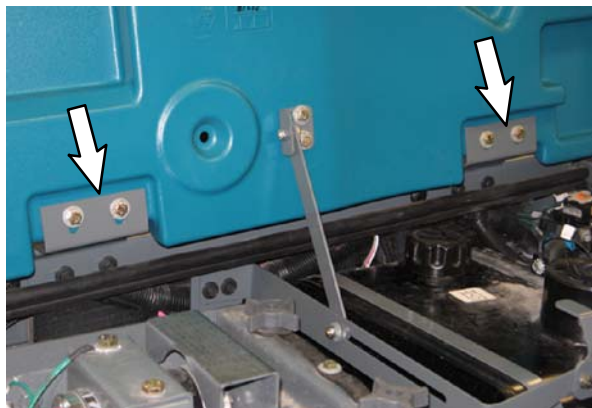


FIG. 57

73. Use a hex screw (59), two nylon washers (21), two flat washers (19), and a hex nut (60) to attach the prop rod (57) to the prop rod support bracket (44). Do not completely tighten the hex screw / hex nut. The prop rod should slide freely in the prop rod bracket. (Fig. 58)

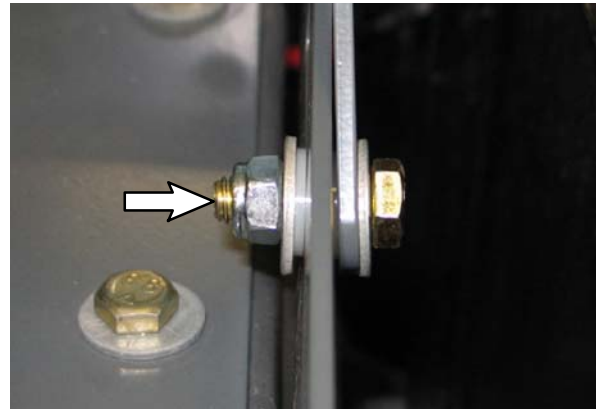


FIG. 58

74. Use two hex screws (11) and two hex nuts (13) to install each of the side door hinges (37) onto the support brace (31). Do not completely tighten hardware. Hardware is tightened during later adjustment. (Fig. 59)

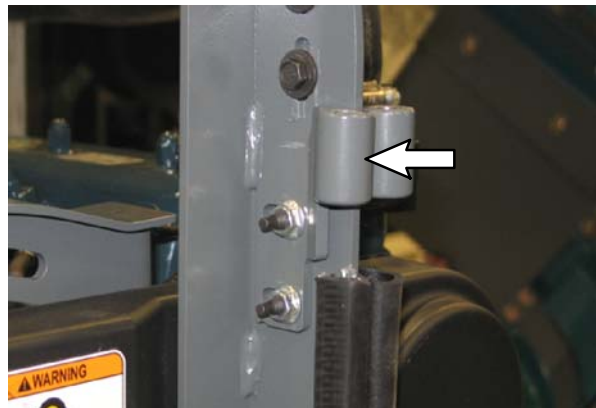


FIG. 59

75. Use the side shroud hinge (43) to set the adjustment for the side door hinges (37). Tighten the loose hardware. (Fig. 60)

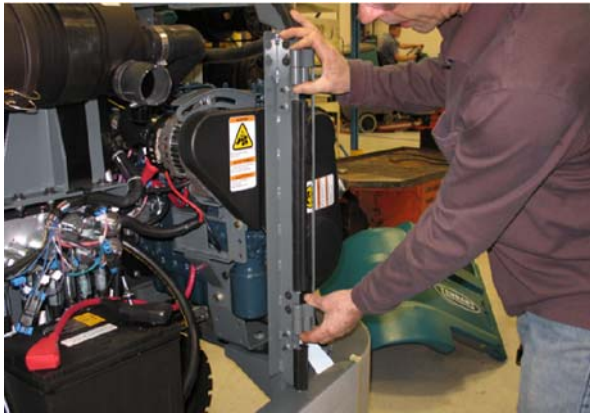


FIG. 60

76. Use two hex screws (11) and two hex nuts (13) to install each engine left rear door hinges (37) onto the support brace (31). Do not completely tighten hardware. Hardware is tightened during later adjustment. (Fig. 61)

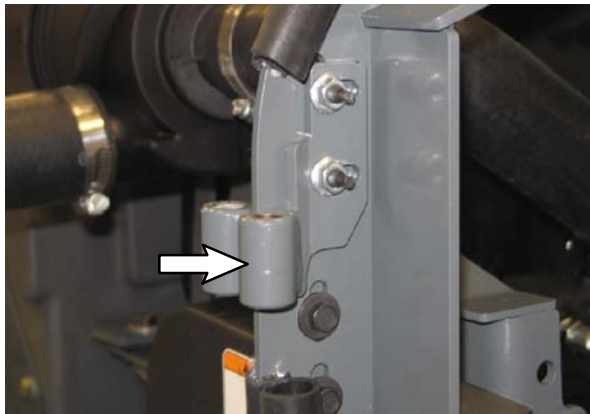


FIG. 61

77. Use the side shroud hinge (43) to set the adjustment for the engine left rear door hinges (37). Tighten the loose hardware. (Fig. 62)



FIG. 62

78. Use the existing hardware and two SEM hex screws (30) to install the right rear hinge bracket (104) onto the machine. (Fig. 63)

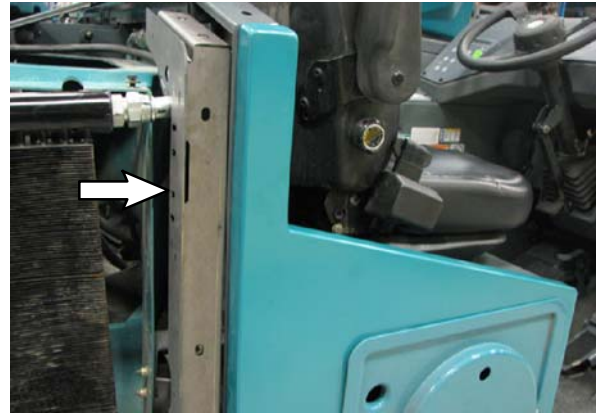


FIG. 63

79. Use two SEMS hex screws (11) and hex nuts (13) to install each right shroud hinge (47) onto the machine. Do not completely tighten hardware. Hardware is tightened during later adjustment. (Fig. 64)

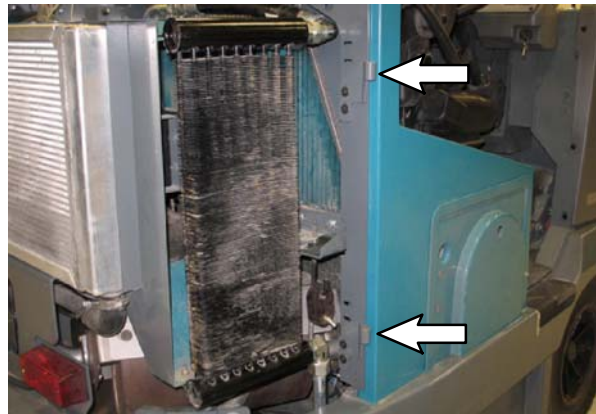


FIG. 64

80. Install 915 mm (36 in) seal (103) onto the right rear hinge bracket (104). (Fig. 65)

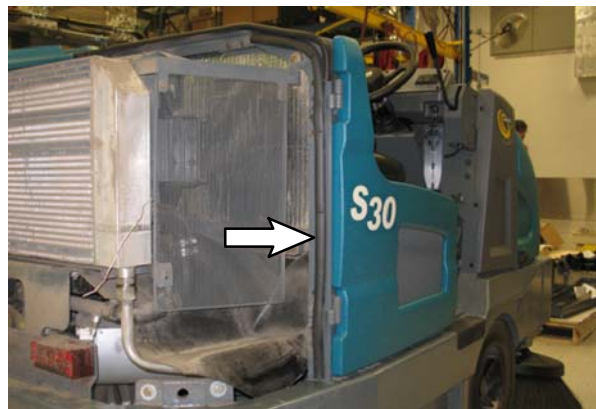


FIG. 65

81. Use the side shroud hinge (43) to set the adjustment for the engine right rear door hinges (37). Tighten loose hardware. (Fig. 66)



FIG. 66

82. Use four hex screws (51) and four flat washers (82) to install the side shroud hinge (43) onto the side cover (77). (Fig. 67)

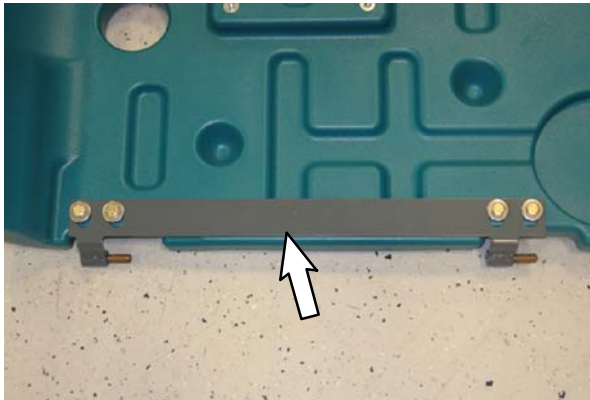


FIG. 67

83. Check the side cover (77) and top cover (81) adjustment. The covers should easily close and the latches should easily secure the top cover and engine side cover closed. (Fig. 68)



FIG. 68

84. Check the adjustment for the side cover (77) and top cover (81). The covers should easily close and the latches should easily secure the top cover and engine side cover closed. (Fig. 68)

85. Use three SEMS hex screws (11) and three hex nuts (13) to install the rear shroud support bracket (36) onto the machine. (Fig. 69)

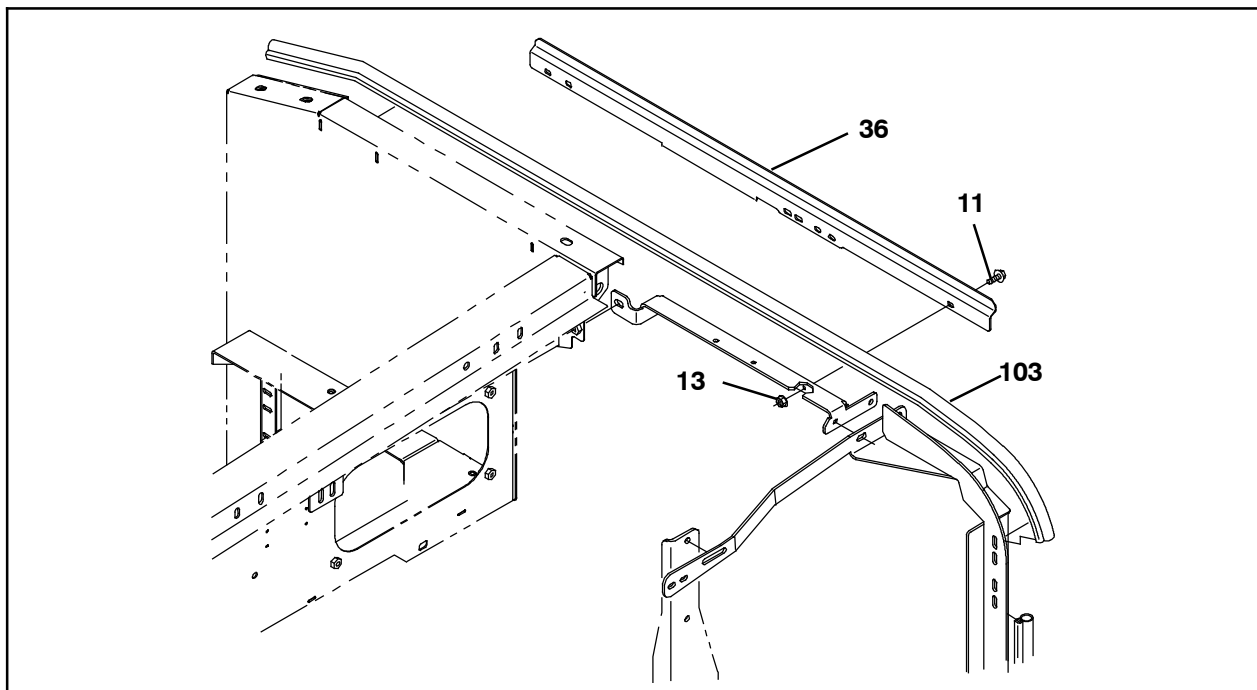


FIG. 69

86. Install the 89 mm (3.5 in) and 370 mm (14.5 in) seal (103) onto support brace (31). (Fig. 70 / Fig. 71)

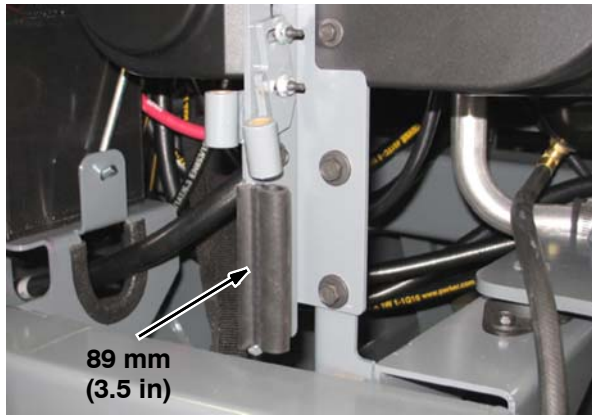


FIG. 70

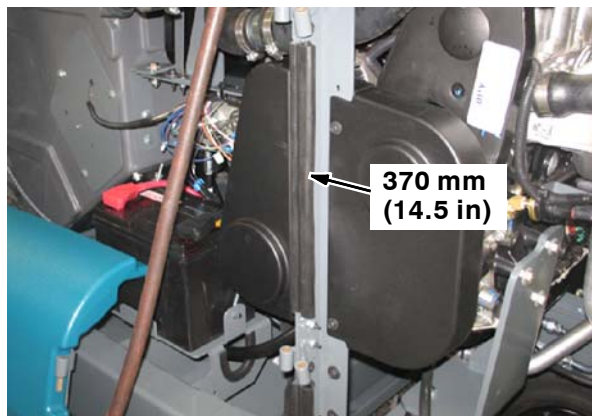


FIG. 71

87. Install the 1650 mm (65 in) seal (103) onto the machine. (Fig. 72 / Fig. 69)

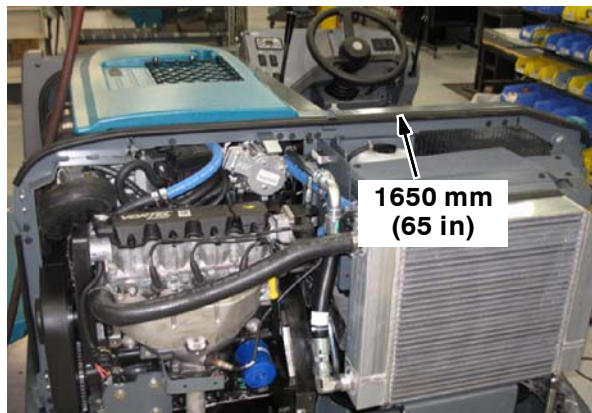


FIG. 72

88. Cut a slit into the 1650 mm (65 in) seal (103) where the shroud latch bracket (34) is going to be installed onto the machine in the following step. (Fig. 73)

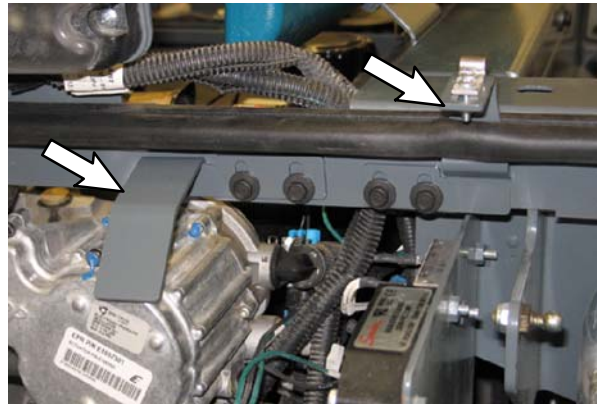


FIG. 73

89. Use two SEMS hex screws (11) and two flange hex nuts (13) to install the upper rear shroud support bracket (35) and the shroud latch bracket (34) onto the rear shroud support bracket (36). (Fig. 73)
90. Use two pan screws (97) and two hex nuts (9) to install the saved latch onto the shroud latch bracket (34). (Fig. 74)

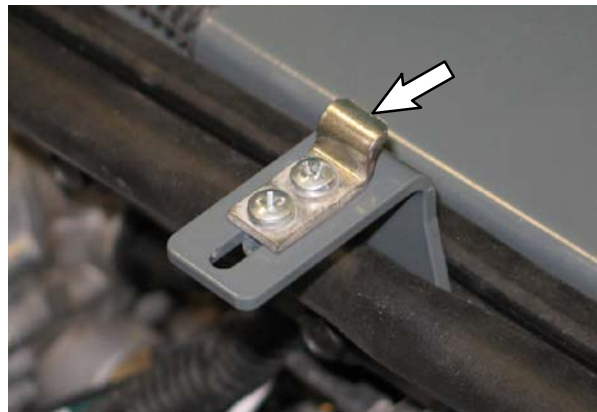


FIG. 74

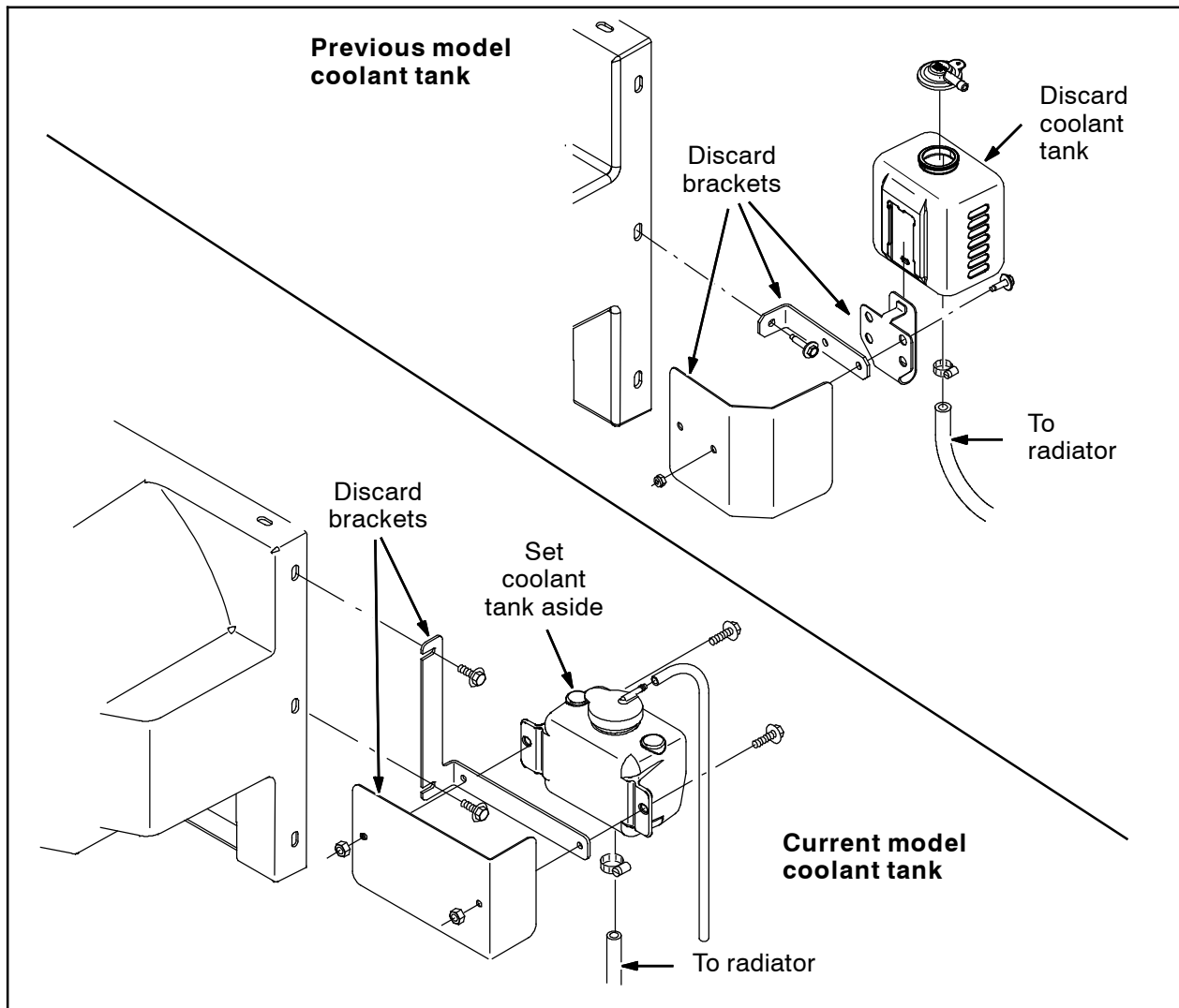


FIG. 75

91. **Diesel Machines Only:** Drain the coolant from the engine into a clean pan or container. Remove the lower coolant tube (1031892) from the machine. Set the hose clamps aside. Discard the hose.
92. Disconnect the hoses from the coolant tank and remove the coolant tank assembly from the machine. Set the coolant tank aside if machine is equipped with the current model tank. Discard the coolant tank if the machine is equipped with the previous model tank. Discard all brackets. Set all hose clamps and hardware aside. (Fig. 75)

93. Use saved hardware to install coolant tank (112) into the bracket (113) and install the coolant tank / bracket onto the radiator shroud. Note orientation of hardware. (Fig. 76)

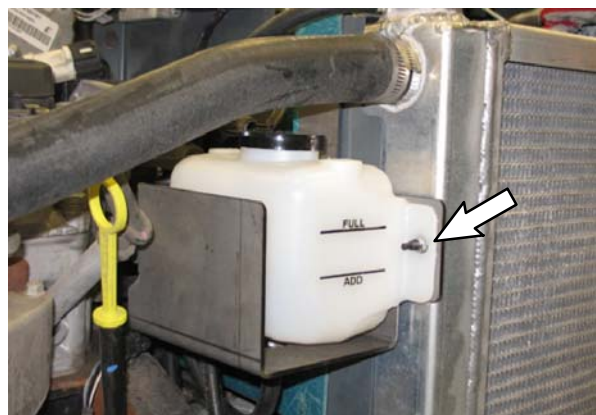


FIG. 76

94. Reconnect the hoses to the coolant bottle.

95. Remove the heat shield from the machine. Set the hardware aside. Discard the heat shield. (Fig. 77)

96. Remove the exhaust pipe from the machine. Discard the exhaust pipe. Set brackets, gasket, and hardware aside. Leave the muffler and tail pipe installed on the machine. (Fig. 77)

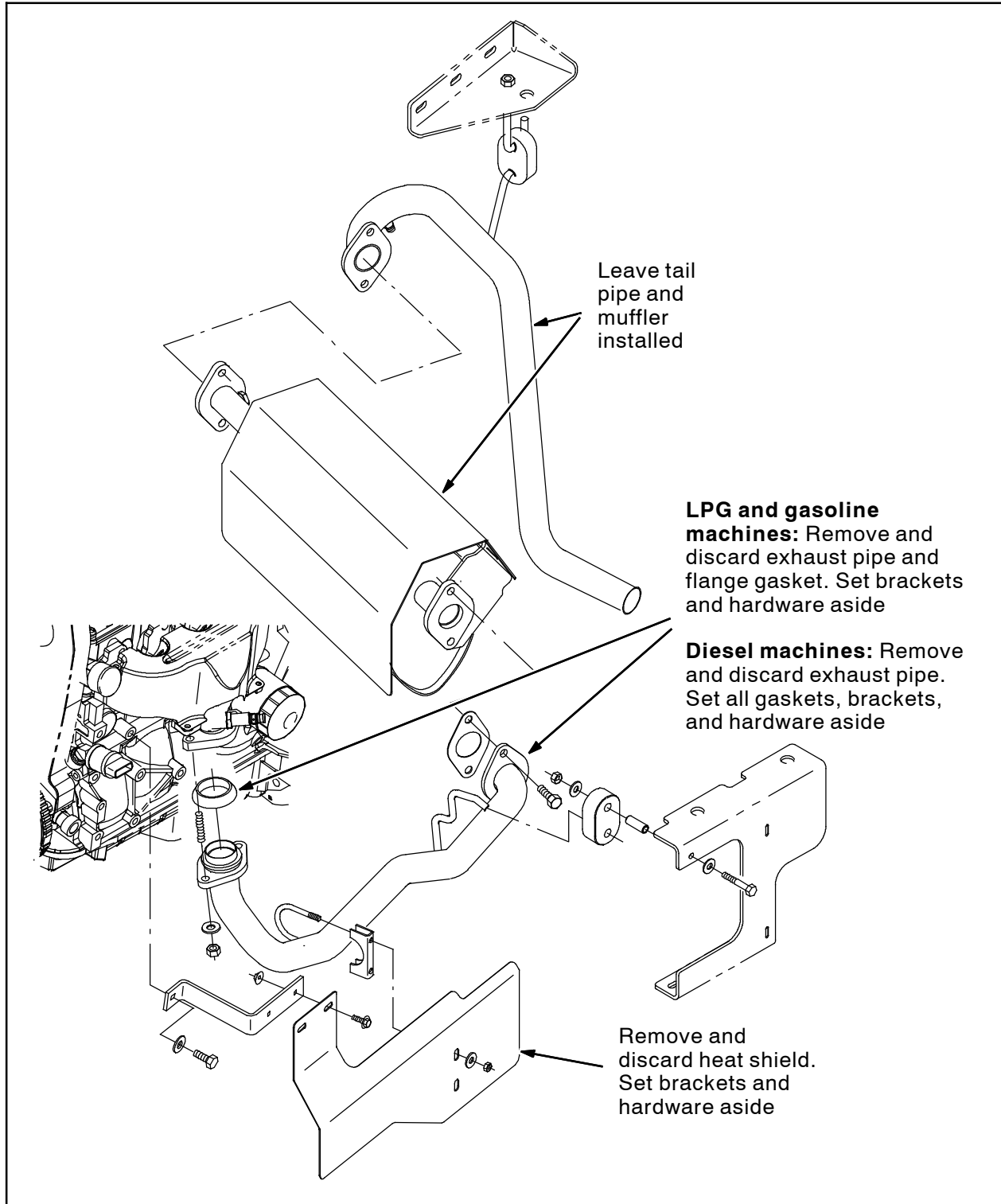


FIG. 77

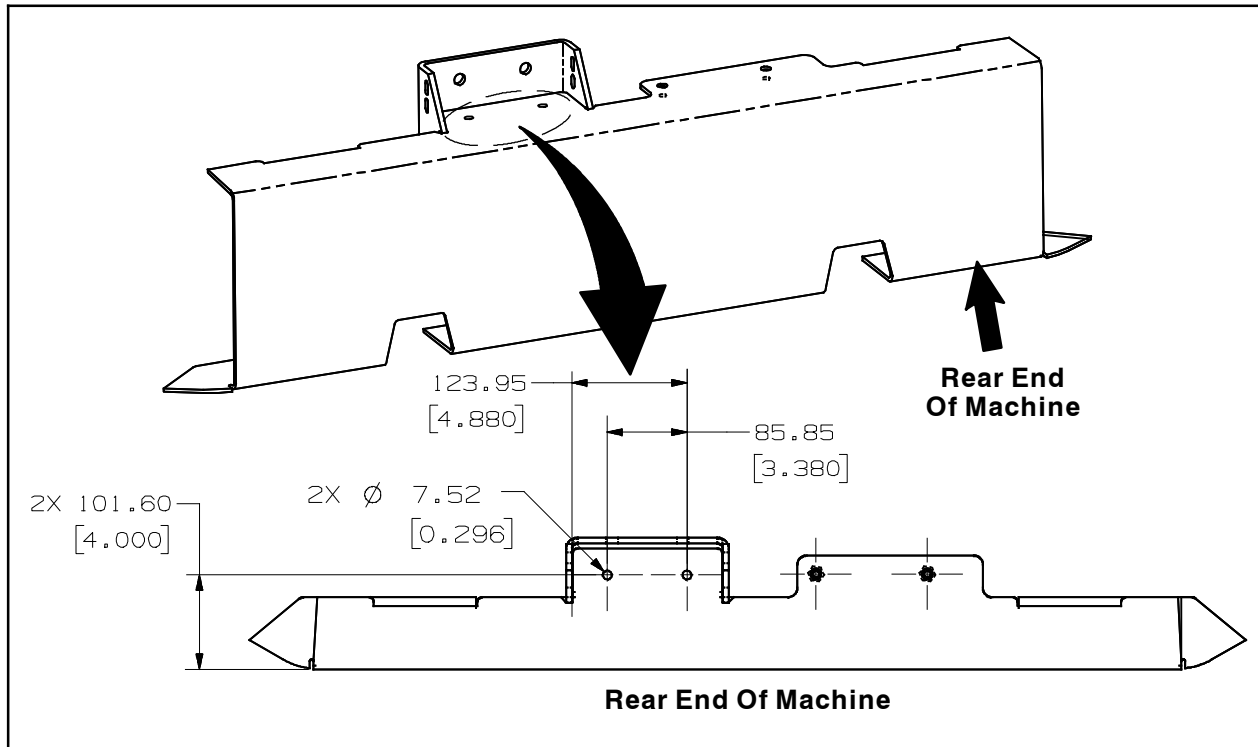


FIG. 78

97. Mark and drill two 7.52 mm (0.298 in) holes into the rear frame of the machine. (Fig. 78)

98. **LPG / Gasoline Machines Only:** Use the saved hardware and brackets to install the exhaust pipe (27) and exhaust gasket (99) onto the exhaust system.

Diesel Machines Only: Use the saved hardware, brackets, and muffler clamp (114) to install the exhaust pipe (27) onto the exhaust system.

99. Use the two SEMS hex screws (11), two hex nuts (13), two flat washers (19), and two hex nuts (96) to install the heat shield (42) onto the machine. (Fig. 79)



FIG. 79

100. **Diesel Machines Only:** Use the saved hose clamps to install the lower coolant tube (115) onto the engine.

101. Use two SEMS hex screws (11) and two flange hex nuts (13) to install the left lower support bracket (32) and the right lower support bracket (33) onto the bracket (107). (Fig. 80)

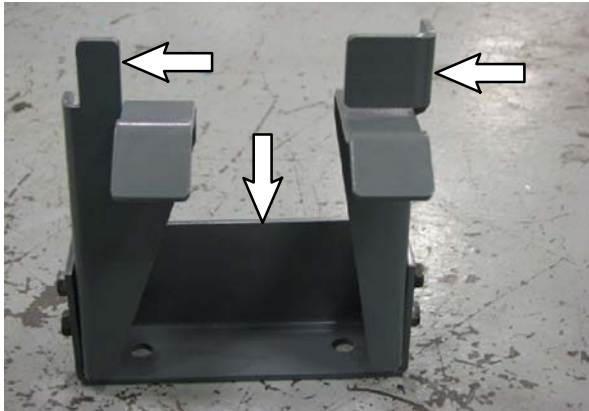


FIG. 80

102. Use two hex screws (108) to install the bracket (107) onto the machine. (Fig. 81)

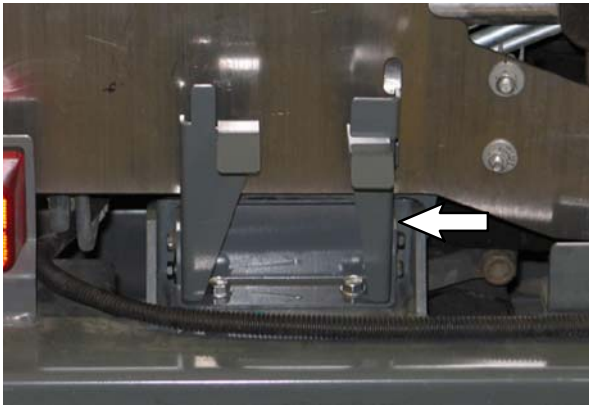


FIG. 81

103. Use four hex screws (51), four flat washers (82), two pan screws (100), and two flat washers (53) to install the right rear screen (48) onto the right rear cover (78). (Fig. 82)

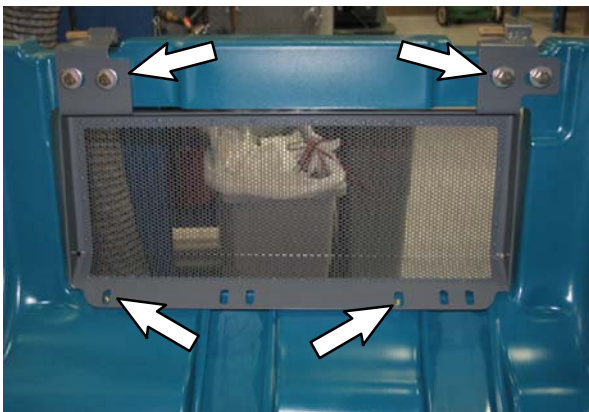


FIG. 82

104. Use four hex screws (51) and four flat washers (19) to install the right rear cover support brackets (49) into the right rear cover (78). (Fig. 83)

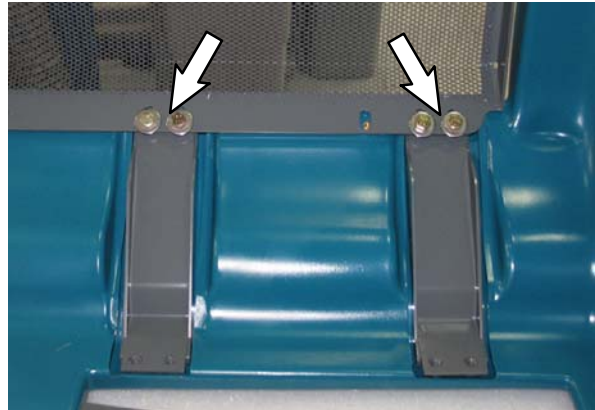


FIG. 83

105. Use eight hex screws (51), eight flat washers (19), and four fender washers (101) to install the grill (50) onto the right rear cover (78). (Fig. 84)

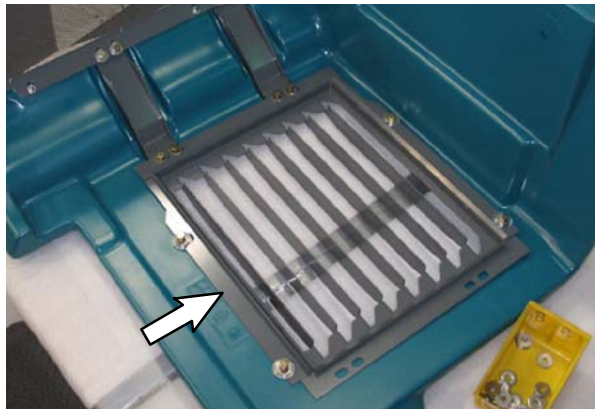


FIG. 84

106. Install two pieces of insulation (68) onto the right rear cover (78). (Fig. 85)

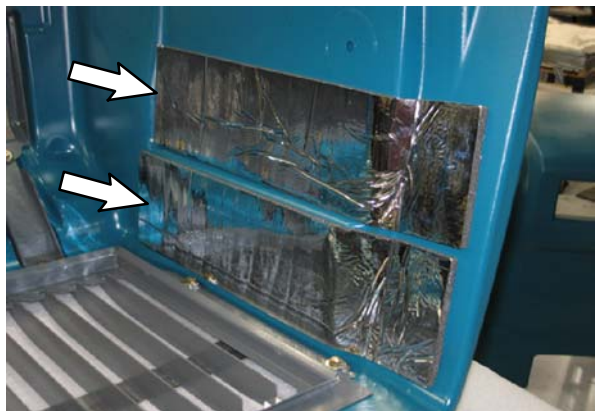


FIG. 85

107. Install two pieces of insulation (24) onto the right rear cover (78). (Fig. 86)

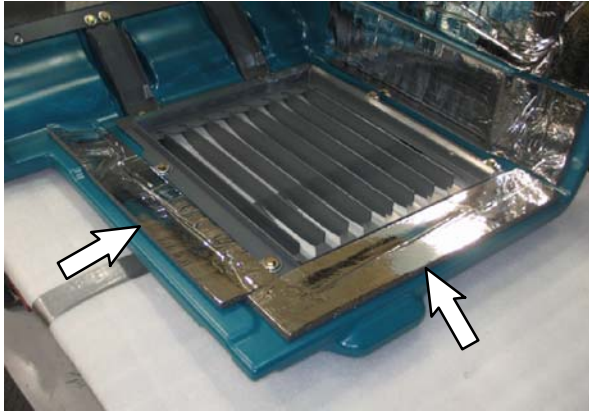


FIG. 86

108. Use two pan screws (97) to install the latch removed from the old rear cover onto the right rear cover (78). (Fig. 87)



FIG. 87

109. Use four pan screws (3) and four flat washers (4) to install the engine shroud panel (22) into the left rear cover (79). (Fig. 88)

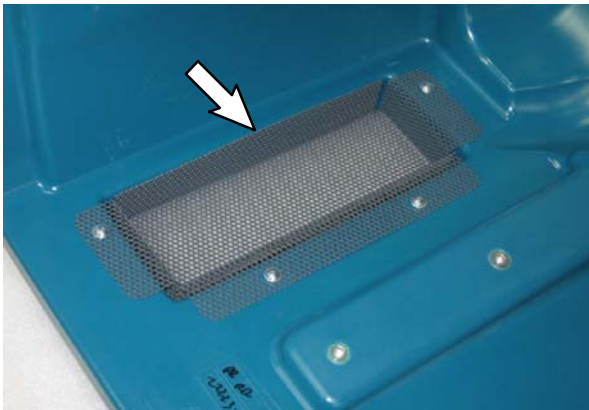


FIG. 88

110. Use four hex screws (51) and four flat washers (82) to install the left heat shield (38) onto the left rear cover (79). (Fig. 89)



FIG. 89

111. Use eleven hex screws (51), eleven flat washers (82) to install the left rear cover support brackets (39) and the left rear heat shield panel (65) into the left rear cover (79). (Fig. 90)



FIG. 90

112. Install insulation (23) and (24) onto the left rear cover (79). (Fig. 91)

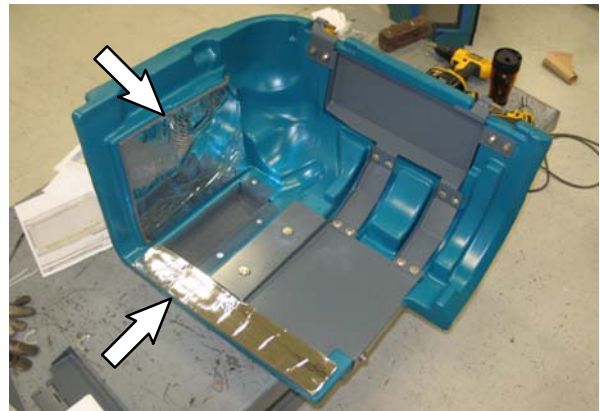


FIG. 91

113. Install the left rear cover (79) and right rear cover (78) onto the machine.
114. Open and close the left rear cover (79) and right rear cover (78) to check adjustment for the left lower support bracket (32) and the right lower support bracket (33). The lower support brackets should firmly secure the rear doors closed.
115. Reconnect the battery cables to the battery.

116. **Diesel Machines Only:** Pour the drained coolant back into the coolant system.
117. Start and test machine to ensure headlights and signal lights function (if machine is equipped with optional signal lights).
118. **Diesel Machines Only:** Check coolant level. If necessary, add coolant to the system.

Bill of Materials for Conv Kit, Shrd, Gas/LPG [S30 Rotomold] - 9007918
Bill of Materials for Conv Kit, Shrd, Dsl [S30 Rotomold] - 9007919

Ref.	Tennant Part No.	Description	Qty.
▽	9007894	Parts Kit, Modif, Rotomold Shrd [S30]	1
▲	1 1056815	Cover, Hppr, Rm-Cptl, Trimmed	1
▲	2 1057934	Plate, Ring, Light	2
▲	3 360973	Screw, Pan, 12-16 X 0.50, F/Plstc	20
▲	4 19066	Washer, Flat, 10	16
▲	5 1057936	Plate, Ring, Headlight, RH	1
▲	6 1057942	Plate, Ring, Headlight, LH	1
▲	7 21168	Plug, Hole, Rnd, 0.25H 0.8L, Brb, Nyl	4
▲	8 06928	Screw, Pan, Phl, M4 X 0.70 X 20, 4.8	2
▲	9 02850	Nut, Hex, Lock, M4 X 0.70, NL	4
▲	10 1059269	Bracket, Angle, Lintel	1
▲	11 1036892	Screw, Hex, M6 X 1.00 X 25, 9.8, SEMS	29
▲	12 1059291	Bracket, Latch, Cover, Top	1
▲	13 07790	Nut, Hex, Flng, M6 X 1.00	27
▲	14 1059339	Hinge Wldt, Cover, Hppr, RH	1
▲	15 1059278	Hinge Wldt, Cover, Hppr, LH	1
▲	16 1037346	Screw, Hex, M8 X 1.25 X 25, 9.8, SEMS	22
▲	17 07791	Nut, Hex, Flng, M8 X 1.25	10
▲	18 15675	Screw, Hex, M8 X 1.25 X 16, SS	4
▲	19 32491	Washer, Flat, 0.31, Std	24
▲	20 1059223	Hinge Wldt, Hppr	1
▲	21 43454	Washer, Flat, 0.34B 0.69D .06, Nyl	4
▲	22 1059440	Panel, Shrd, Eng	1
▲	23 1061147	Insulation, Acstc, 0.5, 11.5 X 14.5 C-O	1
▲	24 1061145	Insulation, Acstc, 0.5, 03.0 X 23.0 C-O	3
▲	25 1057890	Bracket, Mtg, Air-Clnr	1
▲	26 1058092	Door Wldt, Hppr	1
▲	27 1059474	Tube Wldt, Exhaust, Muffler, Gas/LPG (Gas / LPG Machines Only)	1
▲	27 1059532	Tube Wldt, Exhaust, Dsl [Roto Cover] (Diesel Machines Only)	1
▲	29 1057778	Bracket, Sppt, Cover, Rear, LH	1
▲	30 1037358	Screw, Hex, M10 X 1.50 X 35, 9.8, SEMS	2
▲	31 1057776	Brace Wldt, Sppt	1
▲	32 1059477	Bracket, Sppt, Shrd, Rear, Lower, LH	1
▲	33 1059478	Bracket, Sppt, Shrd, Rear, Lower, RH	1
▲	34 1060449	Bracket, Latch, Shrd	1

	Tennant			
Ref.	Part No.	Description		Qty.
▲	35	1059479	Bracket, Sppt, Shrd, Rear, Upper, LH	1
▲	36	1062450	Bracket, Sppt, Rear, Conv, Afrmkt	1
▲	37	1059874	Hinge Wldt, Shrd, LH	4
▲	38	1059996	Panel Wldt, Heat, Shield, LH	2
▲	39	1059211	Bracket, Sppt, Cover, Rear, LH	2
▲	40	1059221	Bracket, Latch, Side, Door	1
▲	42	9007921	Shield, Heat, Gas/LPG, Replmt[Rotomold] (Gas / LPG Machines Only)	1
▲	42	9007920	Shield, Heat, Dsl, Replmt[Rotomold] (Diesel Machines Only)	1
▲	43	1059868	Hinge Wldt, Shrd, Side, LH	1
▲	44	1062749	Bracket, Sppt, Prop, Rod	1
▲	47	1060639	Hinge Wldt, Shrd, RH	1
▲	48	1059520	Grill Wldt, Screen, Rear, RH	1
▲	49	1059516	Bracket Wldt, Sppt, Cover, Rear, RH	2
▲	50	1059481	Grill Wldt, Rear, RH	2
▲	51	16735	Screw, Hex, M8 X 1.25 X 16, 8.8	45
▲	52	06933	Screw, Pan, Phl, M5 X 0.80 X 16, 4.8	2
▲	53	41178	Washer, Flat, 0.25, Fender	2
▲	56	1059285	Bracket, Prop, Rod, Cover	1
▲	57	1059286	Plate, Prop, Rod	1
▲	58	39277	Screw, Hex, M8 X 1.25 X 25, 8.8	1
▲	59	06955	Screw, Hex, M8 X 1.25 X 35, 8.8	1
▲	60	08709	Nut, Hex, Lock, M8 X 1.25, NI	2
▲	61	1057961	Hinge, .25Pin .12, Cover, Top	2
▲	62	1061048	Label, Pyc, Matl [Cyclone, S30]	1
▲	63	1061047	Label, White, Pyc Matl [S30]	1
▲	64	1060765	Bracket, Mtg, Filter, RH	1
▲	65	1061000	Panel, Heat, Shield, Rear, LH	1
▲	68	1061146	Insulation, Acstc, 0.5, 05.5 X 23.0 C-O	2
▲	69	1058108	Panel, Shrd, Seat	1
▲	73	1056817	Cover, Lntl, LH, Rm-Cphg, Trimmed	1
▲	74	1056818	Cover, Lntl, RH, Rm-Cphg, Trimmed	1
▲	75	1056829	Cover, Seat, Rm-Cptl	1
▲	77	1056821	Cover, Side, Rm-Cptl	1
▲	78	1056826	Cover, Rear, RH, Rm-Cptl, Trimmed	1
▲	79	1056824	Cover, Rear, LH, Rm-Cptl, Trimmed	1
▲	80	1040467	Screw, Hex, M6 X 1.00 X 20, 9.8, SEMS	2
▲	81	1056823	Cover, Top, Rm-Cptl, Trimmed	1
▲	82	1017218	Washer, Flat, 0.32B 1.00D .12, SS	23
▲	84	82829	Clamp, Cable, Stl, 0.63D X 0.75W, 1Hole	4
▲	85	1037354	Screw, Hex, M8 X 1.25 X 30, 9.8, SEMS	4
▲	86	32490	Washer, Flat, 0.25, Std	4
▲	87	1014563	Washer, Flat, 0.40B 1.12D .12, SS	4
▲	88	1037346	Screw, Hex, M8 X 1.25 X 25, 9.8, SEMS	10
▲	89	06943	Screw, Hex, M6 X 1.00 X 20, 8.8	1
▲	90	08708	Nut, Hex, Lock, M6 X 1.00, NL	1
▲	91	1045434	Rod Wldt, Safety, Hppr Cover	1
▲	92	06935	Screw, Pan, Phl, M5 X 0.80 X 25, 4.8	2
▲	93	06549	Nut, Hex, Lock, M5 X 0.80, NL	4
▲	94	10632-14	Grommet, Rbr, 1.00ID, F/1.4H, .12 Matl	1
▲	95	10632-9	Grommet, Rbr, 0.63ID, F/0.8H, .12 Matl	1

	Ref.	Tennant Part No.	Description	Qty.
▲	96	27979	Nut, Hex, Flng, .31-18	2
▲	97	49697	Screw, Pan, Phl, M4 X 0.70 X 10, SS	8
▲	98	368649	Seal, Bulb, 90, 1.00D .25GRIP, Bulk	1
▲	99	1011216	Gasket, Exhaust, .07, 1.63ID, 2/3.4BC (Gas / LPG Machines Only)	1
▲	101	30013	Washer, Flat, 0.31, Fendr	4
▲	102	1041873	Fastener, Wire, Tie [Button Head]	2
▲	103	367515	Seal, Bulb, Str, 0.76H .93W Adh, Bulk	?
▲	104	1062332	Bracket Wldt, Conv, Afmkt	1
▲	105	1053318	Screw, Pan, Phl, 08-16 X 1.00, F/ Plstc	4
▲	106	CD001	Glovenet-525 Document Rack/Net 60200104	1
▲	107	1062152	Bracket,Cover, Mtg, Rotomold [S30]	1
▲	108	76099	Screw, Hex, M8 X 1.25 X 25, Fmg	2
▲	110	1035660	Gasket, Ure, .50, 07.47W, 15.47L, Adh	1
▲	111	1025182	Seal, Bulb, 90, 0.75D .11Grip Bulk	1
▲	112	1054382	Tank, Coolant, 03.6W 04.1HI 05.5L,1Liter	1
▲	113	1062316	Bracket, Mtg, Tank	1
▲	114	24012	Clamp, Muffler, 1.62D (Diesel Machines Only)	1
▲	115	1059468	Tube, Coolant, Lower, Dsl [Roto-mold] (Diesel Machines Only)	1

TENNANT COMPANY
P. O. Box 1452
Minneapolis, MN 55440-1452